

ICS HWPB™ Hard Wired OEM Panelboards



ICS hard wired Panelboard or “HWPB” Panelboards are custom-built panels designed for industrial and commercial applications. The HWPB offers a range of benefits and features to meet the needs of our customers. With NEMA 1, NEMA 3R, and NEMA 4X enclosures available, these Panelboards can be used in a wide range of locations, from indoor to outdoor and even direct spray or harsh environments.

One of the significant benefits of ICS hard wired Panelboards is their quick turnaround time. Customers who require 3PH 3W 480V panels and cannot wait on standard factory lead times benefit greatly from these custom-built panels. Our expert team designs and engineers each panelboard to meet each customer’s specific requirements quickly, without sacrificing quality or performance.

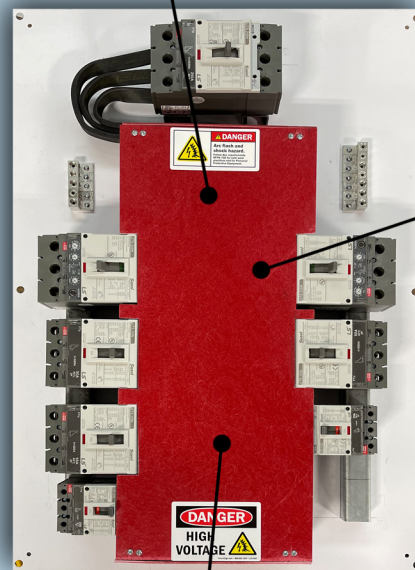
ICS hard wired Panelboards offer a range of features, including customizable circuit breakers, main breaker or MLO, tin and silver plated copper or aluminum busbar. These features allow for a high degree of flexibility in use, ensuring that the Panelboards can be tailored to meet the specific needs of our customers.

The HWPB panel utilizes all the same components that a standard factory panel would down to the layout, busbar ratings, voltages, amperages, and enclosure. The only main difference is the HWPB is built using nVent Eriflex flexible busbar for its branch connector kits instead of rigid bare or insulated copper. Not only does this allow for ease of access while installing or interchanging branch breakers, it also provides maximum design flexibility for branch breaker layouts while maintaining the same compact physical footprint. Whether you require minimal enclosure width for mounting your panel in a tight space, or additional space for an over-sized wire bending radius- the HWPB is the right panelboard for the job.

In addition to its design flexibility, the HWPB is an industry leading OEM panelboard due to its availability and unmatched lead time. Standard turnarounds for configurations up to 1200A Main Breaker 480V Δ is 4-6 weeks after receipt of signed drawings with the option for expediting up to 10 working days. This truly sets the HWPB apart in a class of its own. HWPB Panelboards are UL listed in certain configurations and meet all NEC code requirements for lighting and distribution panelboards.



Rigid Copper Busbar System rated for up to 1200A & 480V



Phenolic finger-safe barrier prevents arc flash and shock hazards during installation & field maintenance



nvent ERIFLEX connector kits allow for maximum circuit flexibility and branch breaker customization.



INTEGRATED
CIRCUIT SOLUTIONS

ICS HWPB™

Hard Wired OEM Panelboards



PART NUMBER BUILDER

HWPB Series

Example: HWPB 33 4 M400 D - SS6*65k

- HWPB- ICS Hard Wired Panelboard
- 33- 3 Phase/3 Wire
- 4- 480VΔ
- M400- 400 A MAX
- D- 30 CKT
- MB400- 400A Main Breaker
- T- Top Fed
- SS6- 316L SS Enclosure



INTEGRATED
CIRCUIT SOLUTIONS

HWPB 33 4 M400 D -

Panel Type
HWPB Hard Wired Panelboard

Phase/Wire
13 1 Phase/3 Wire
34 3 Phase/ 4 Wire
33 3 Phase/ 3 Wire

Voltage
2 120/240 or 208Y/120
4 480/277 or 480
6 600/347 or 600

Busbar Max Amperage
120/240V 100, 250, 400, 600
480/277V 100, 250, 400, 600
480V 100, 250, 400, 600, 800, 1200
600/347V or 600V 250, 400, 800, 1200

Number of Circuits
A 12 CKT
B 18 CKT
C 24 CKT
D 30 CKT
E 36 CKT
F 42 CKT



ICS HWPB™

Hard Wired OEM Panelboards



PART NUMBER BUILDER

HWPB Series

Example: HWPB 33 4 M400 D - MB400 T - SS6*65k

- HWPB- ICS Hard Wired Panelboard
- 33- 3 Phase/3 Wire
- 4- 480VΔ
- M400- 400 A MAX
- D- 30 CKT
- MB400- 400A Main Breaker
- T- Top Fed
- SS6- 316L SS Enclosure



INTEGRATED
CIRCUIT SOLUTIONS

MB400 T - SS6*65k

Main Breaker

MB *insert amperage

Orientation

T Top Fed

B Bottom Fed

Enclosure

N NEMA 1 (Painted Steel)

R NEMA 3R (Carbon Steel)

G NEMA 4/12 (Carbon Steel Gasketed)

SS4 NEMA 4X (304SS)

SS6 NEMA 4X (316L SS)

XM NEMA 4X (Non-Metal)

Factory Modifications

50C Ambient Compensated Breakers

ST1 Shunt Trip 120V Main

ET1 Electronic Trip Main (L/S)

ET2 Electronic Trip Main (L/S/I)

ET3 Electronic Trip Main (L/S/I/G)

M65k 65kAIC Main Breaker

65k 65kAIC Main & Branch

